

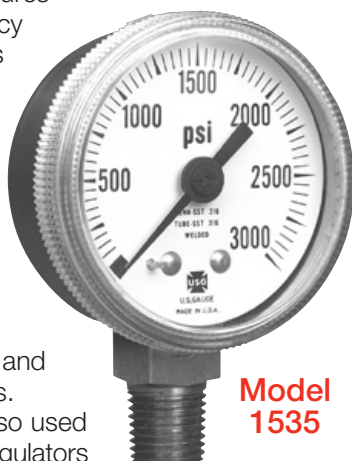


Product Data

Special Application Gauges Series 1500 Corrosion Resistant Pressure Gauges

DESCRIPTION

The Model 1535 features $\pm 1\%$ of span accuracy and utilize 300 series stainless steel case. These heavy duty 2" and 2-1/2" pressure gauges are specifically designed to withstand the corrosive atmospheres, such as salt air, sour gas, and other industrial gases. These gauges are also used in specialty gauge regulators and gas cabinets, as well as many other applications. The Model 1535 features all internal wetted surfaces of 316L, making these gauges ideally suited for use with corrosive process media.



**Model
1535**

The Model P1535 is available in pressure ranges from 30" Hg VAC-0 psi to 0-3000 psi. This precision gauge incorporates rugged case construction with rear pressure relief, and a seamless Bourdon tube with welded joints for heavy duty service.

This gauge is also available in a version for the semiconductor industry. Please reference our web site at www.ametekusg.com.

SPECIFICATIONS

SIZE: 2" and 2-1/2"

CASE: Drawn stainless steel polished with pressure relief in back of case

RING AND WINDOW: One piece, threaded polycarbonate

POINTER: Aluminum, adjustable, black finish

DIAL: Aluminum, white background with black markings; dual scale dials available in some pressure ranges

BOURDON TUBE

P-1535: 316L seamless stainless steel

CONNECTION

P-1535: 1/4-18 ANPT 316L stainless steel

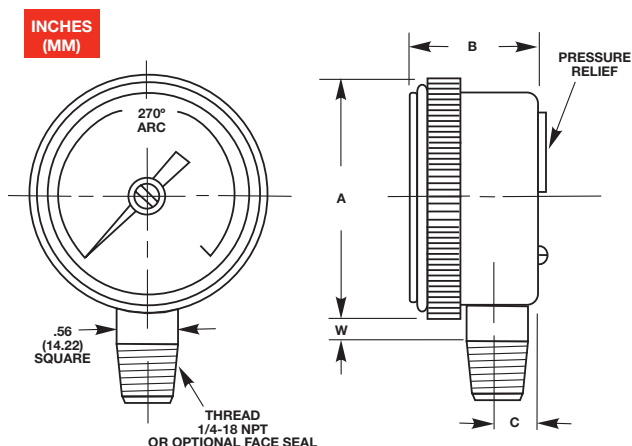
RANGE: VAC-0-30 psi to 3000 psi

ACCURACY (Grade 1A):

$\pm 1\%$ of span for range to but not including 3000 psi
 $\pm 2\%$ of span for ranges 3000 psi and above

SCALES: psi, bar, kg/cm², kPa (single or dual scale)

MODEL NUMBER	DIAL SIZE	UNIT	A	B	C	W
1535	2"	inches	2.28	1.18	.41	.24
	50	mm	57.9	30	10.4	6.1
1535	2-1/2"	inches	2.83	1.22	.41	.23
	63	mm	71.9	31	10.4	5.8



AMETEK®
www.ametekusg.com

© 2008, by AMETEK, Inc. All rights reserved.
Printed in the U.S.A. 908PDF (160166)

ALL ORDERS CAN BE SENT TO:

On-line fax: 215-323-9450 or e-mail to usg.sales@ametek.com

Sales/Technical Support: 215-257-6531
900 Clymer Avenue
Sellersville, PA 18960 U.S.A.

Customer Service: 727-536-7831
8600 Somerset Drive
Largo, FL 33773 U.S.A.



Specifications are subject to change without notice. Visit our Web site for the most up-to-date information.



Product Data

Special Application Gauges

Series 1500 Corrosion Resistant Pressure Gauges

SPEC NUMBER SELECTION CHART

Series 1500		
	Model 1535 1/4-18 ANPT Low Mount	Model 1535 1/4-18 ANPT Low Mount
Bourdon Tube	316L Stainless Steel	316L Stainless Steel
Connection	316L Stainless Steel	316L Stainless Steel
Size	2"	2-1/2"
Range	Spec No.	Spec No.
30"-0-30 psi	148953	-
30"-0-60 psi	149641	-
30"-0-150 psi	149642	-
0-15 psi	148954*	110792*
30 psi	148955	110793
60 psi	148956	110794
100 psi	148957	110690
160 psi	148958	110795
200 psi	148959	110796
300 psi	148960	110797
400 psi	148961	110798
600 psi	148962	110799
1000 psi	148963	110800
1500 psi	148964	110801
2000 psi	148965	110802
3000 psi	148966	148182

* Dial graduated on 180° arc

AMETEK®
www.ametekusg.com

© 2008, by AMETEK, Inc. All rights reserved.
Printed in the U.S.A. 908PDF (160166)

ALL ORDERS CAN BE SENT TO:

On-line fax: 215-323-9450 or e-mail to usg.sales@ametek.com

Sales/Technical Support: 215-257-6531
900 Clymer Avenue
Sellersville, PA 18960 U.S.A.

Customer Service: 727-536-7831
8600 Somerset Drive
Largo, FL 33773 U.S.A.



Specifications are subject to change without notice. Visit our Web site for the most up-to-date information.